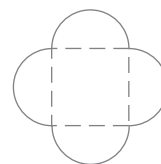
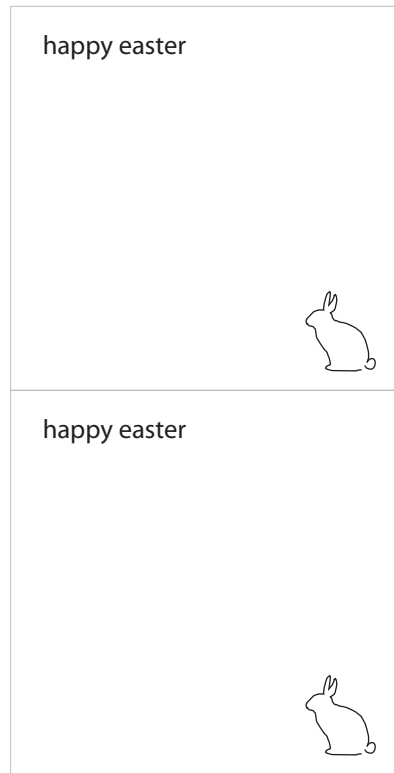
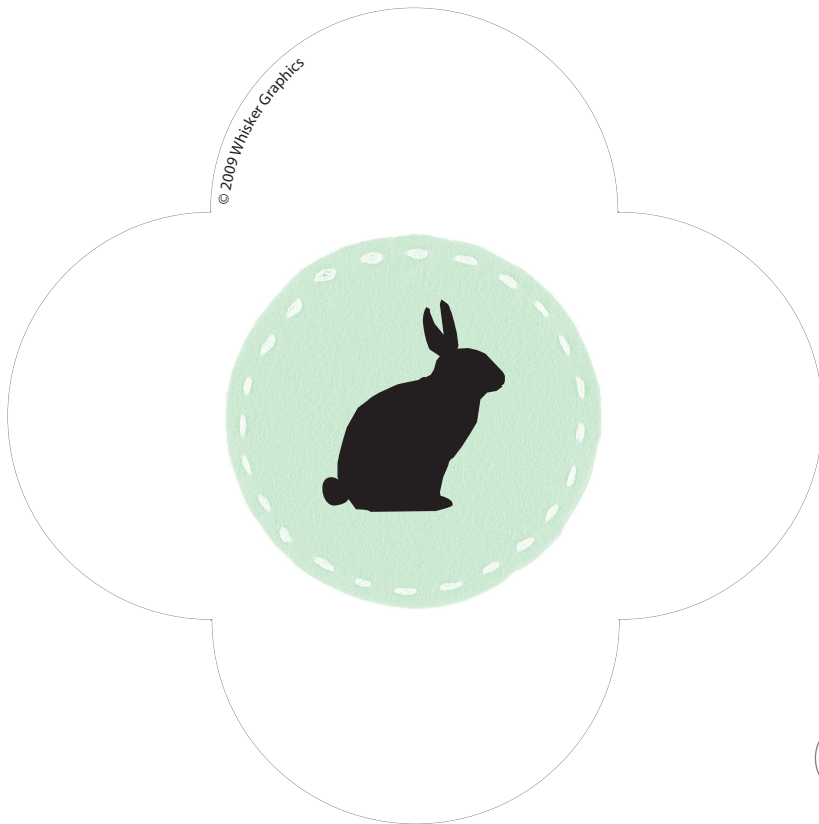
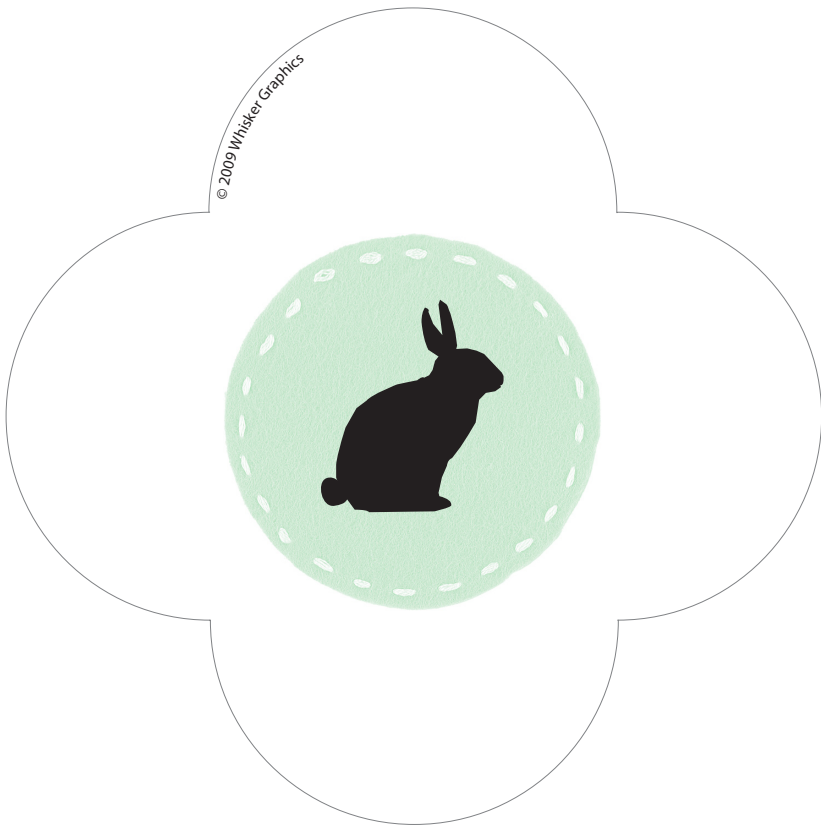


# 2" Square Mini Envelopes

## IDEAS

- tuck in a bouquet
- slip under pillow
- put in someone's lunch
- gift card
- at place settings
- tuck in a pocket



80lb or lighter weight white or light cream card stock works best.

cut around edges

← score where envelope folds (see dashed lines in diagram)

fold flaps so they interlock